


Quick Manual

1. Please copy the file **HD2016 V6.2.9.exe** from a USB stick.
2. After installation of the program: click the icon and  run the program.
3. The window as shown in Fig. 1 will appear:

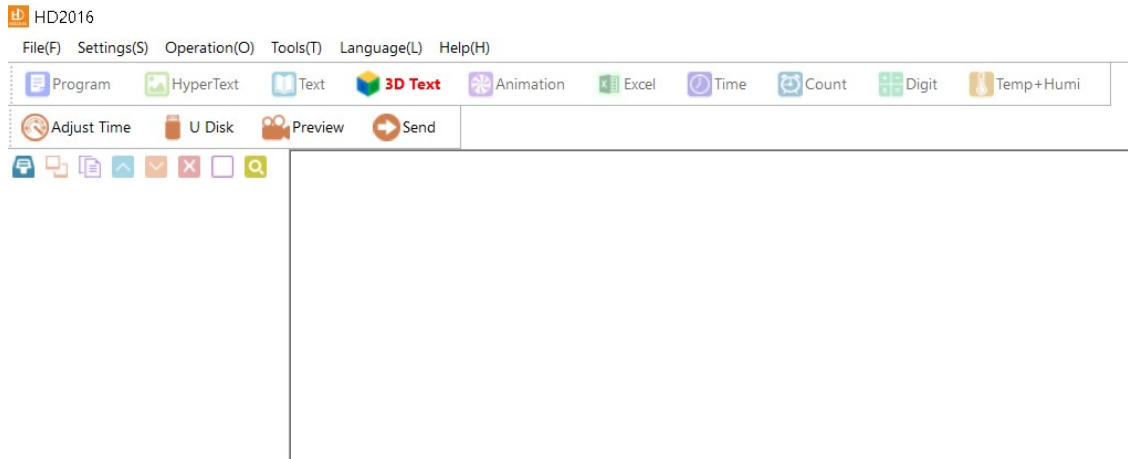


Fig. 1

4. Then click select the **File (F)** and **New Screen (N)** as shown in the Fig. 2.

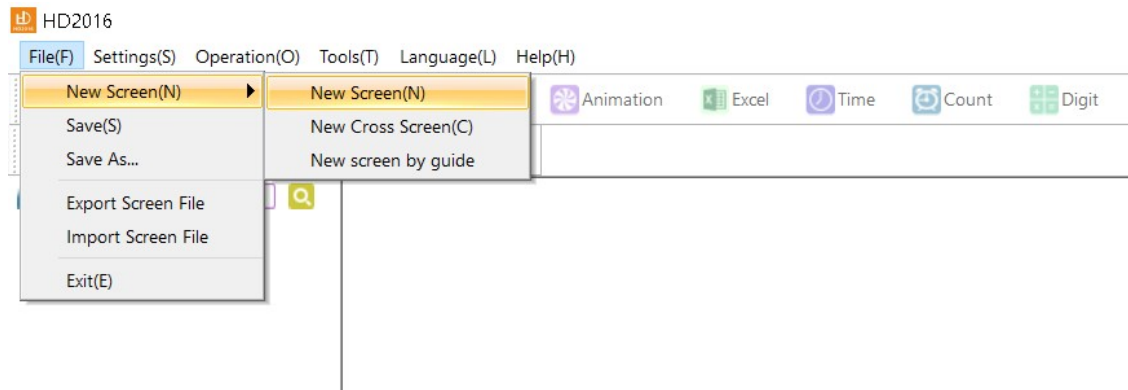


Fig. 2

5. Password dialog box will appear as shown in Fig. 3. Write the **password: 168** and press enter.

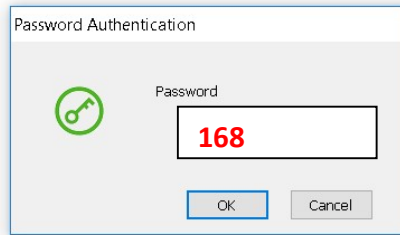


Fig. 3

6. The new dialog box will appear as shown in Fig. 4. Now please choose the correct parameters in **Screen Setting** like: screen width and height, card model, color.
 - a. In case of a single color LED Display: choose Card Model: **HD-U6A**, Color: **Single Color**, Width: **96**, and Height: **16 or 32** depending upon your LED Display height.
 - b. In case of full color LED Display: choose Card Model: **HD-U60-75**, Color: **Full Color**, Width: **96**, and Height: **16 or 32** depending upon your LED Display height.

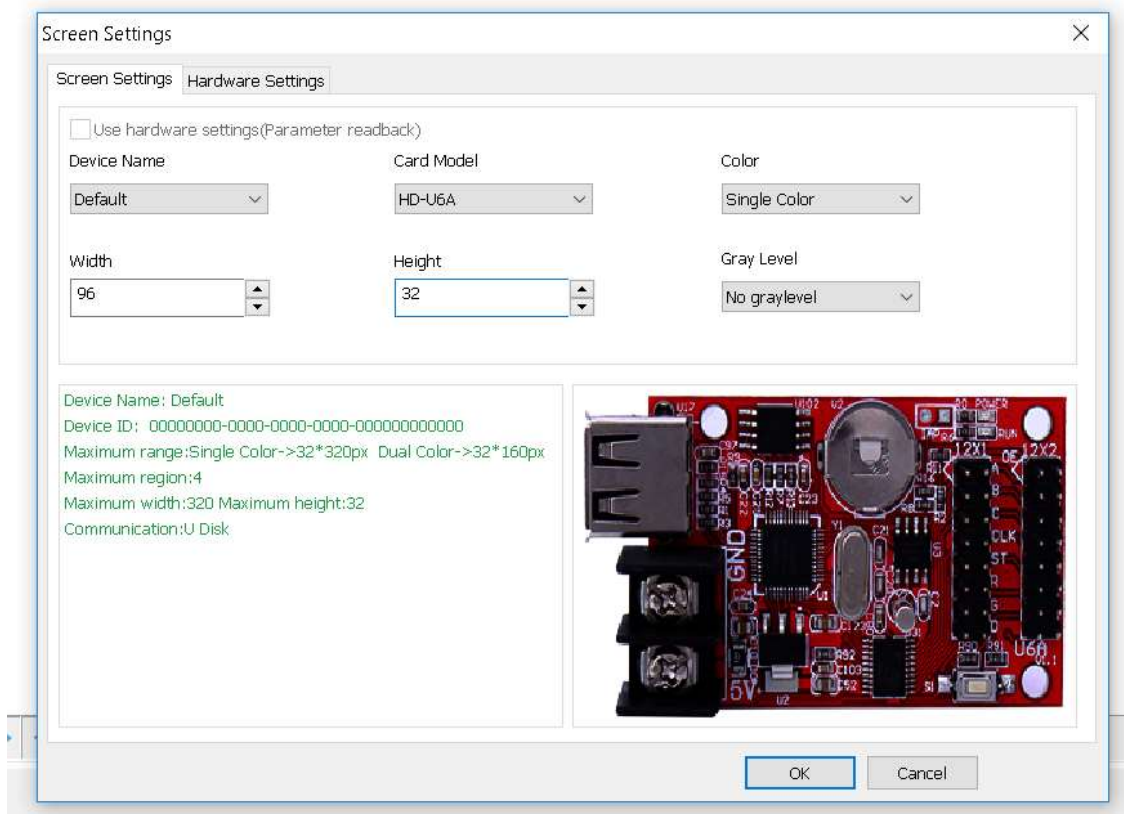


Fig. 4

7. Please click **Text** then Text writing panel will appear as shown in Fig. 5. Correct screen Width and Height (red oval marked) also, if not correct.

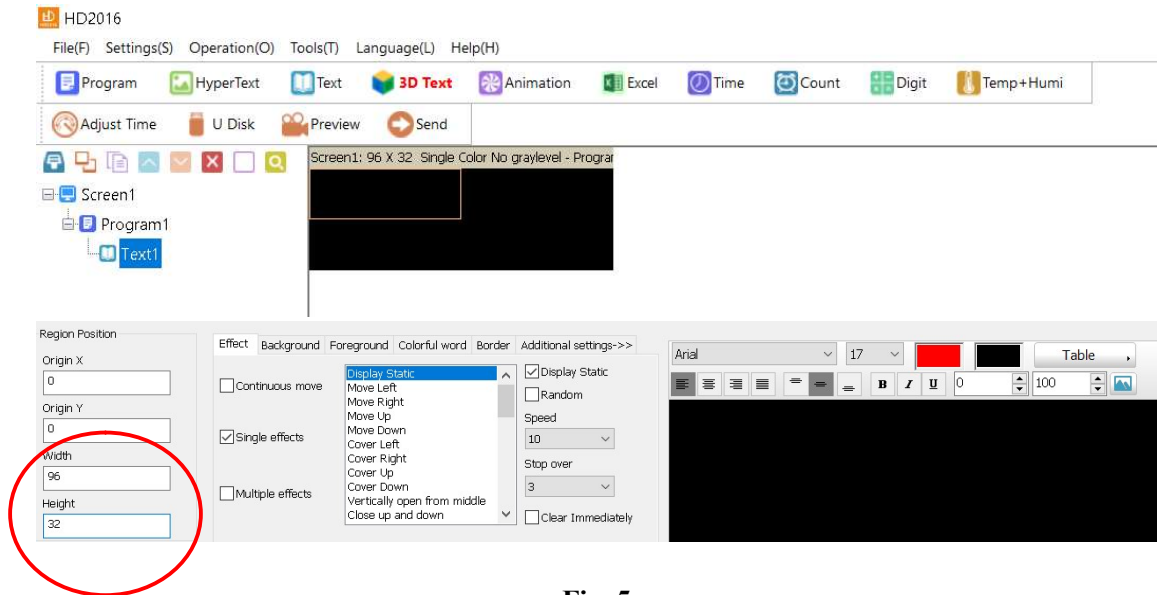


Fig. 5

8. After writing the text and choosing the **Effect** and **other parameters** according to your own desire, export the file to the USB stick by clicking the **U Disk** icon as shown in Fig. 6 and Fig. 7.

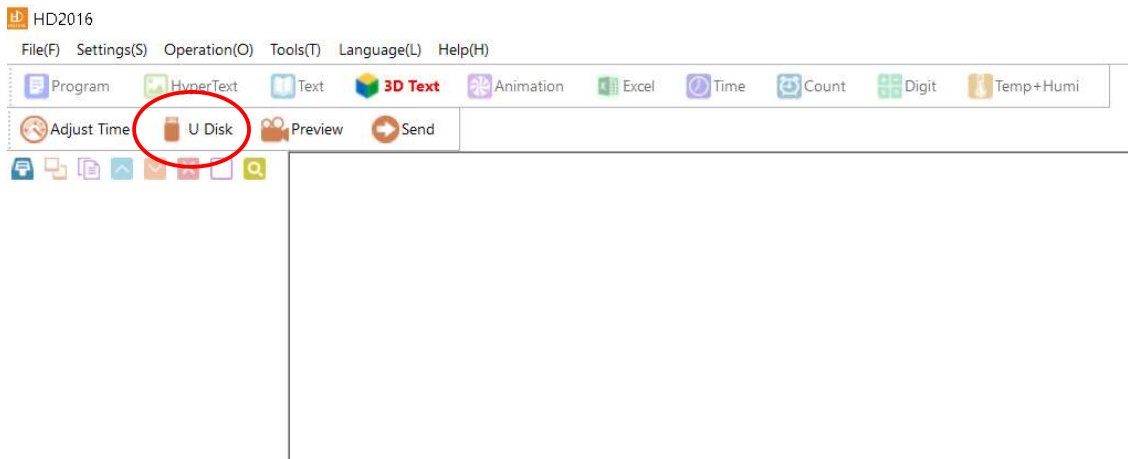


Fig. 6

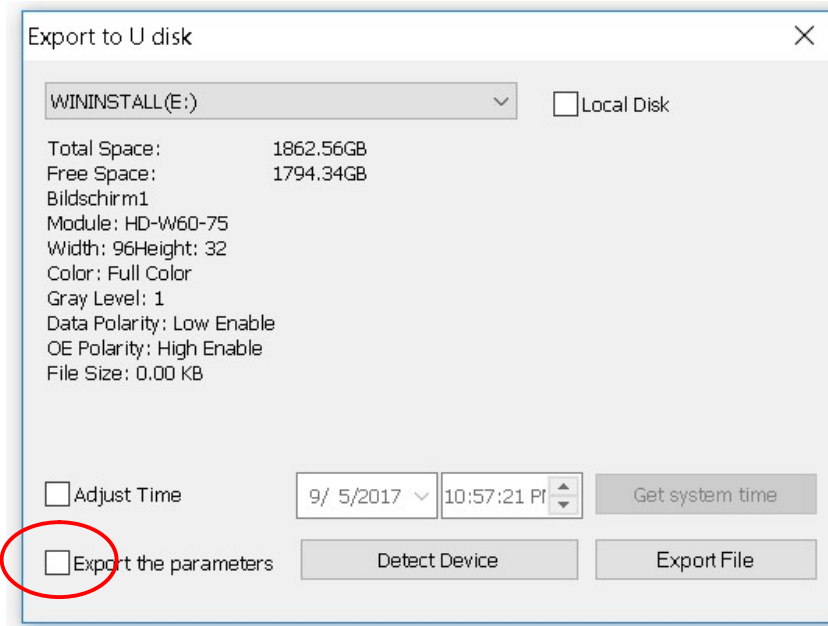


Fig. 7

9. Then at the end, please connect the USB stick to the LED Display USB adapter (while LED Display is connected to power supply). Wait till OK message appear. After this, please take out USB stick.